

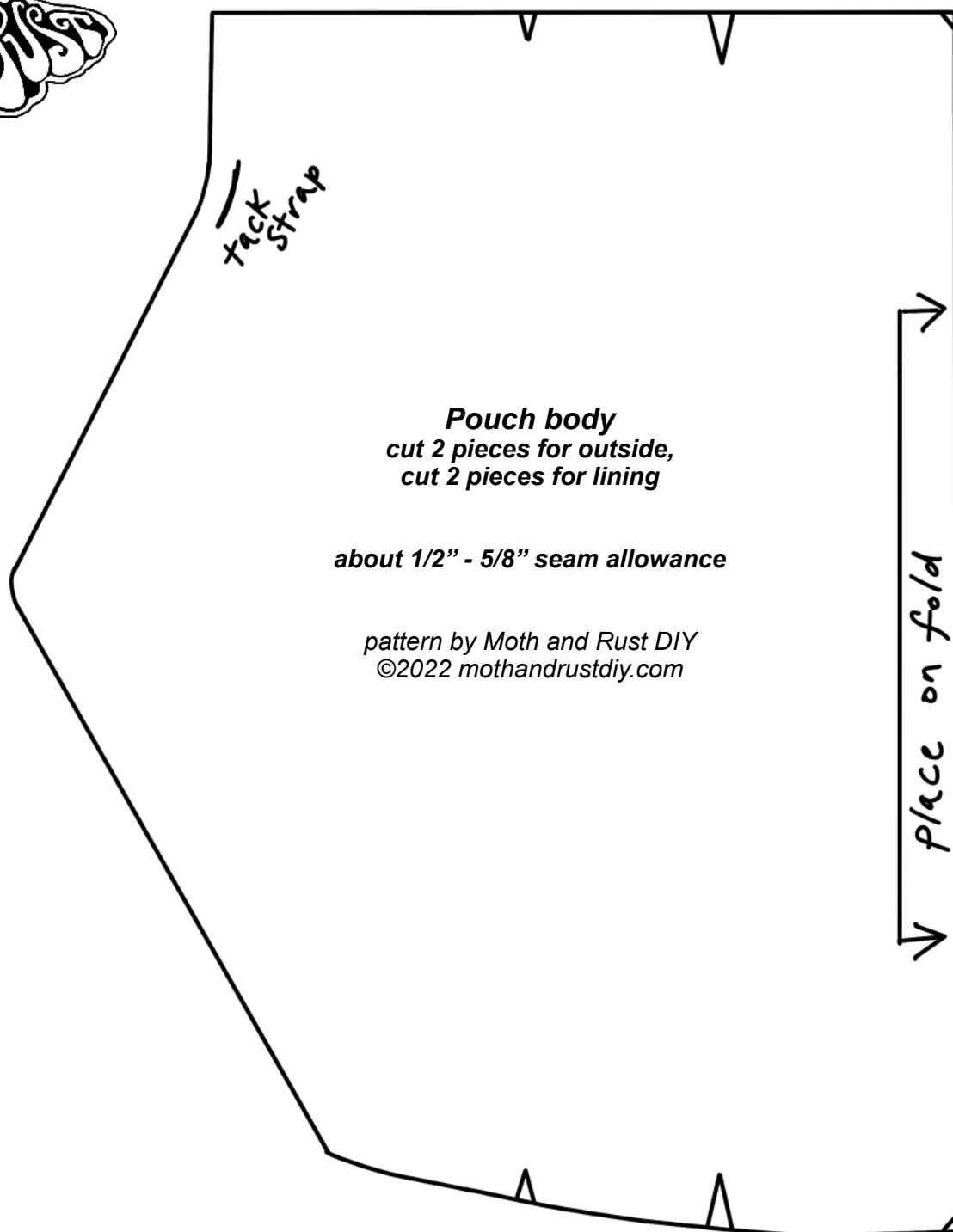
Wristlet Pouch Tutorial

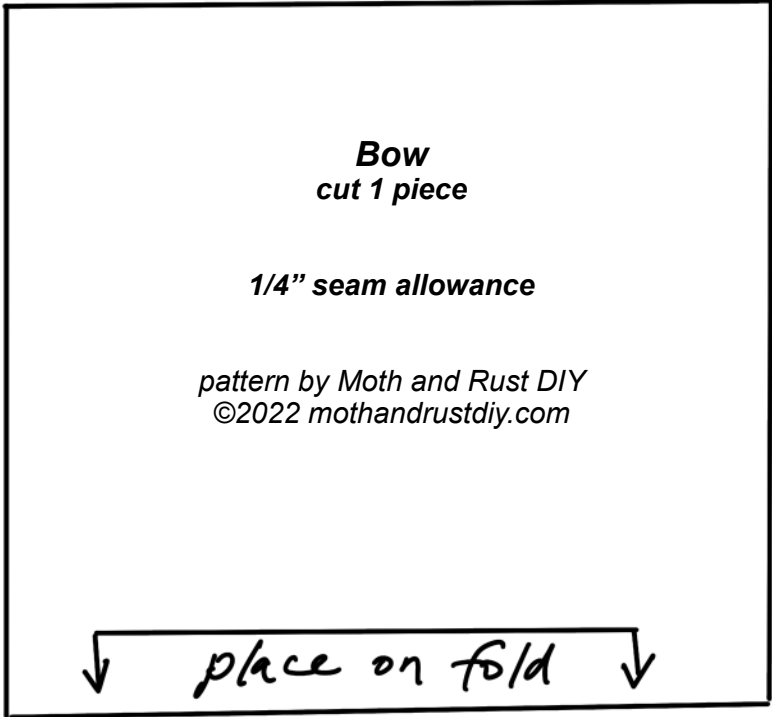
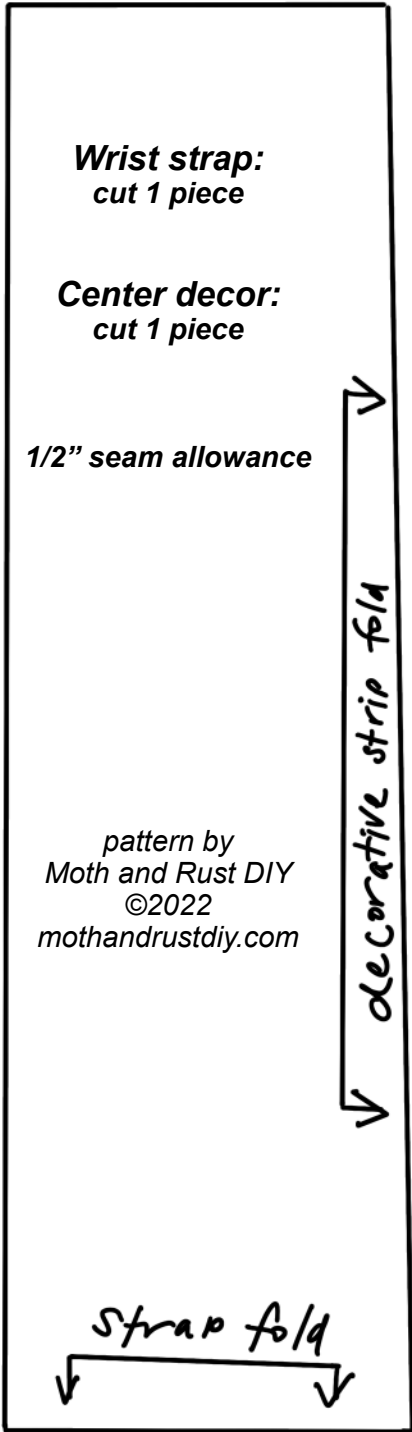
Pattern & tutorial by mothandrustediy.com

Materials needed for this project:

- Woven (non-stretch) fabric for the outside and lining of the pouch (less than a fat quarter)
- Scrap fabric for embellishments
- Lace or trim (about 15")
- 8" zipper

For full detailed instructions, see the tutorial video at youtube.com/c/mothandrustediy





For full detailed instructions, see the tutorial video at youtube.com/c/mothandrustdiy